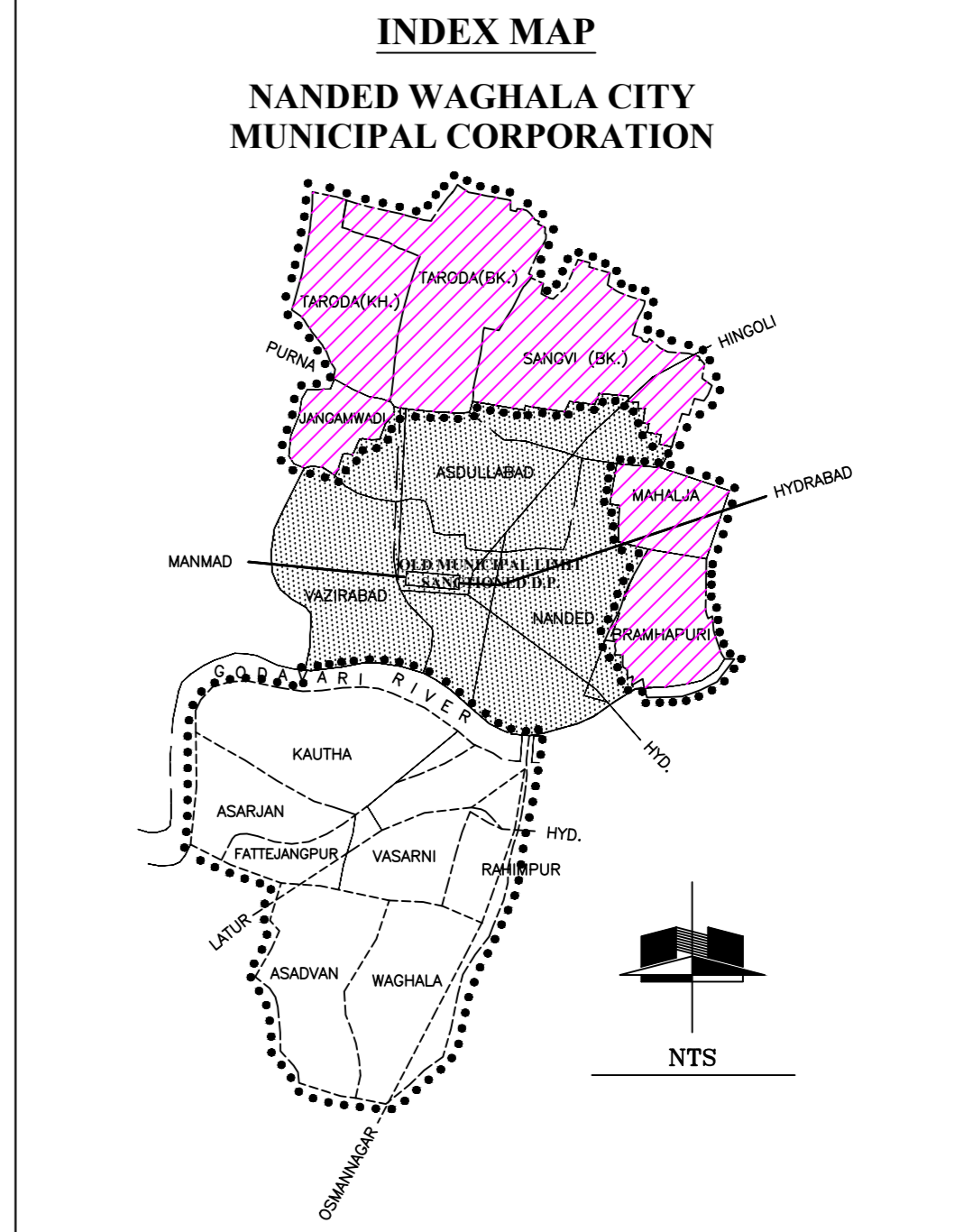


DRAFT DEVELOPMENT PLAN OF NANDED-WAGHALA MUNICIPAL CORPORATION (ADDITIONAL AREA)

PROPOSED LAND USE PLAN (PUBLISHED U/S 26 OF M.R. & T.P. ACT 1966)



SANCTION DEV. PLAN OF NANDED (REVISED)
NANDED WAGHALA CITY MUNICIPAL CORPORATION BOUNDARY ADD. AREA
VILLAGE BOUNDARY
PART I

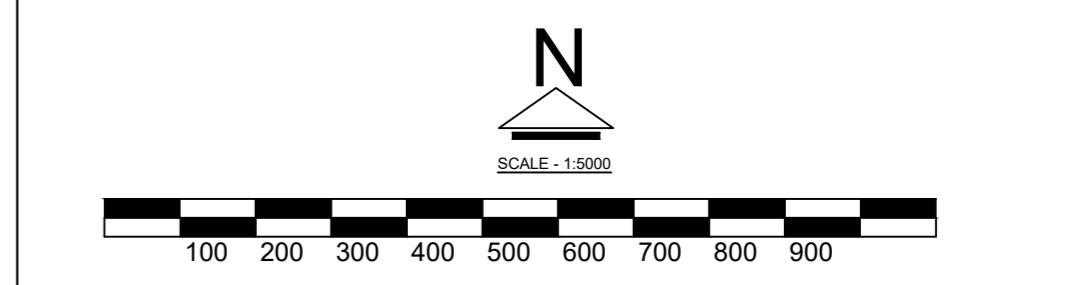
LEGEND

MUNICIPAL CORPORATION ORIGINAL AREA	[Symbol]
MUNICIPAL CORPORATION ADDITIONAL AREA	[Symbol]
VILLAGE BOUNDARY	[Symbol]
GAOZHAN / CONGESTED BOUNDARY	[Symbol]
RESIDENTIAL EXISTING	[Symbol]
RESIDENTIAL PROPOSED	[Symbol]
COMMERCIAL	[Symbol]
INDUSTRIAL	[Symbol]
PUBLIC & SEMI PUBLIC	[Symbol]
PUBLIC UTILITY	[Symbol]
TRANSPORT & COMMUNICATION	[Symbol]
RECREATIONAL ACTIVITIES	[Symbol]
AGRICULTURAL / NO DEVELOPMENT ZONE	[Symbol]
WATER BODIES	[Symbol]
PROPOSED REVERSERVATIONS	[Symbol]
PROPOSED ROADS	[Symbol]
RESTRICTIVE LINE (H.F.L.)	[Symbol]
PROHIBITIVE LINE (N.F.L.)	[Symbol]

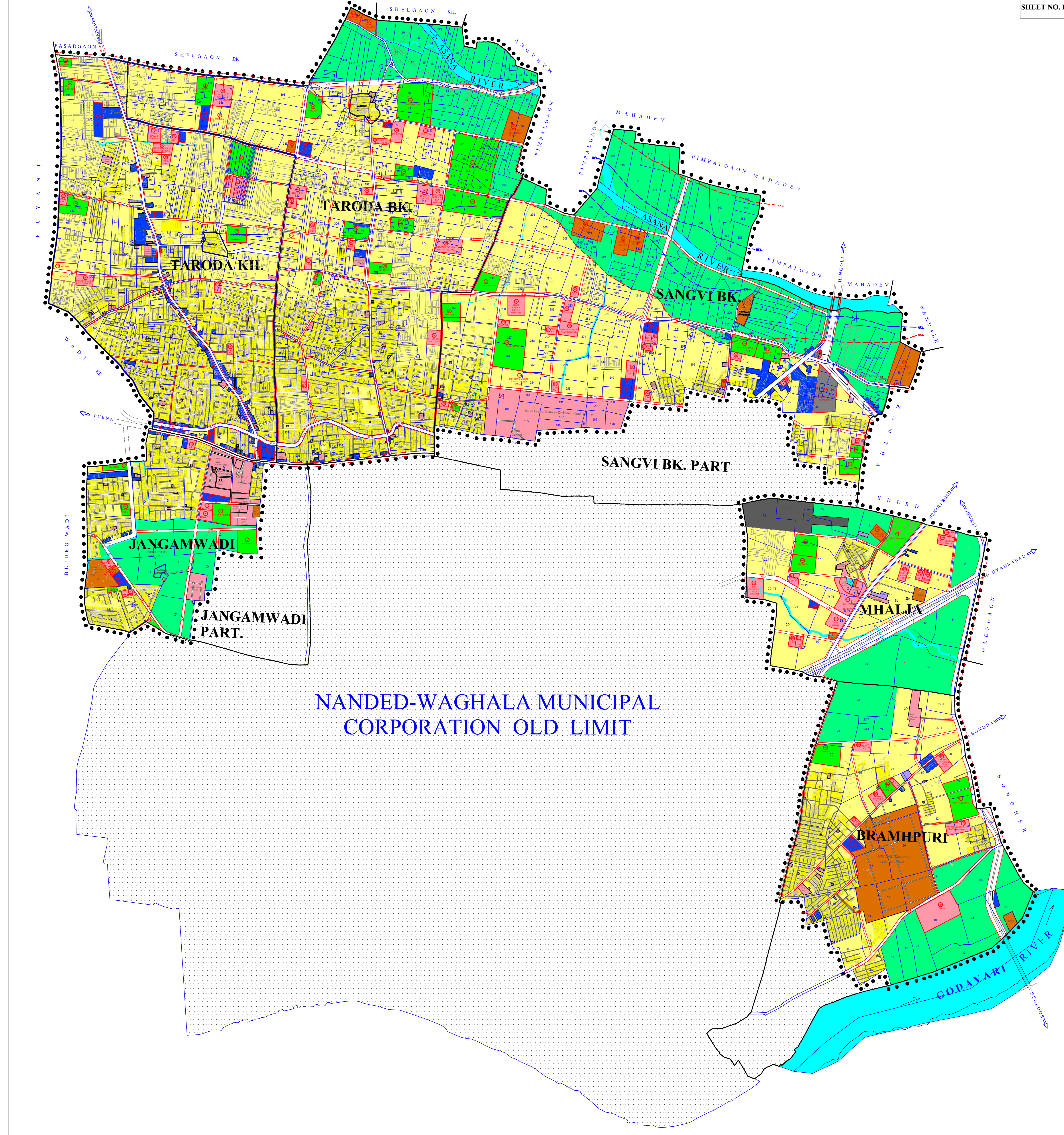
ABBREVIATIONS -

- 1. P.S. - PRIMARY SCHOOL
- 2. P.G. - PLAY GROUND
- 3. H.S. - HIGH SCHOOL
- 4. W.T.P. - WATER TREATMENT PLANT
- 5. B.G. - BURIAL GROUND
- 6. C.G. - CREMATION GROUND
- 7. S.C. - SHOPPING CENTER
- 8. S.T.P. - SEWERAGE TREATMENT PLANT
- 9. LIB. - LIBRARY
- 10. H.C. - HEALTH CENTER
- 11. T. - TEMPLE / M-MOSQUE / C- CHURUCH

Note:-



MD. RAZA KHAN
APPOINTED OFFICER U/S 21 (4A) OF M.R.&T.P. ACT 1966 FOR DEVELOPMENT PLAN OF NANDED-WAGHALA MUNICIPAL CORPORATION (ADD. AREA) AND DEVELOPMENT PLAN SPECIAL UNIT, NANDED-WAGHALA MUNICIPAL CORPORATION, NANDED.



NANDED-WAGHALA MUNICIPAL CORPORATION OLD LIMIT